

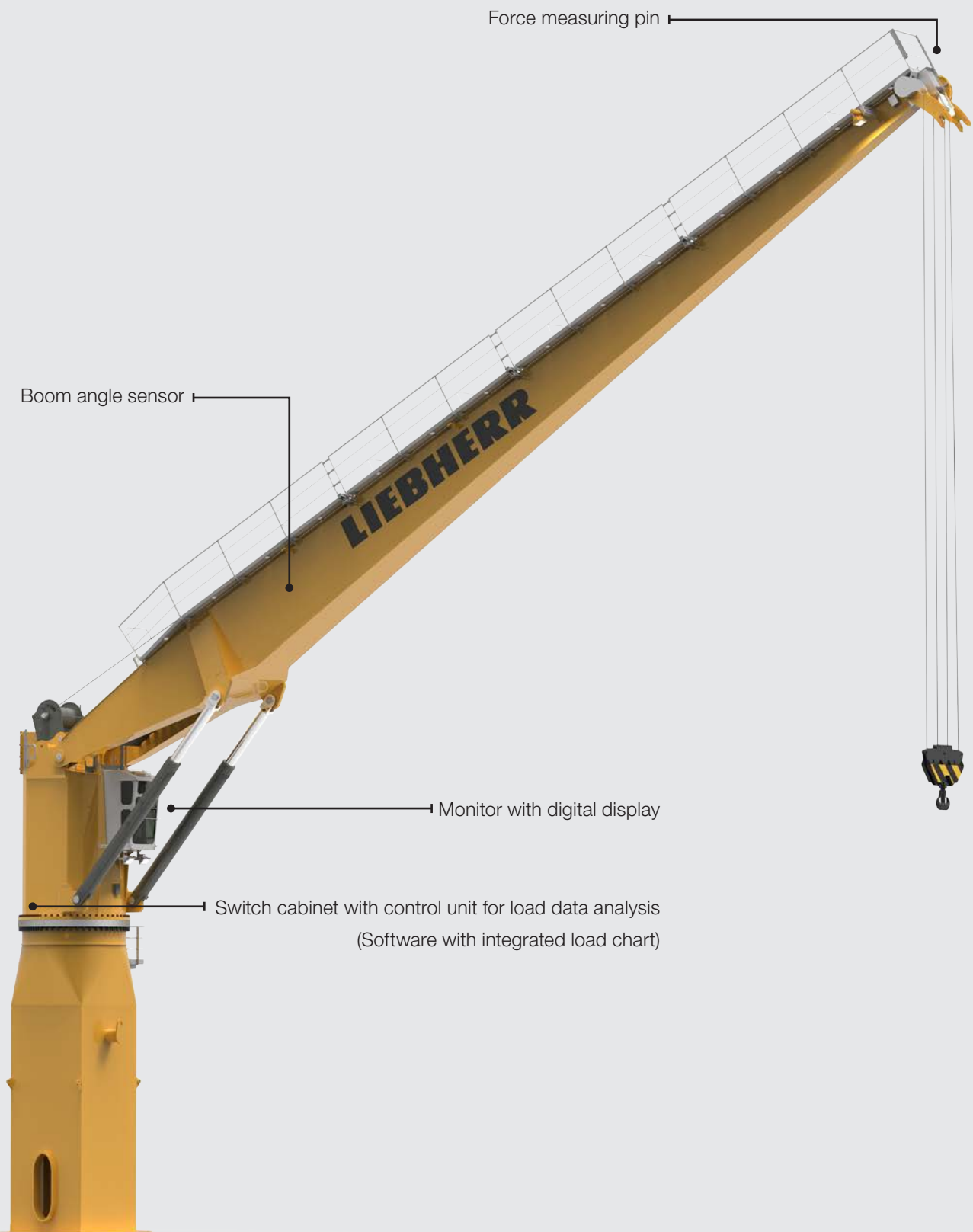
Liebherr Customer Service

# Load Moment Limitation

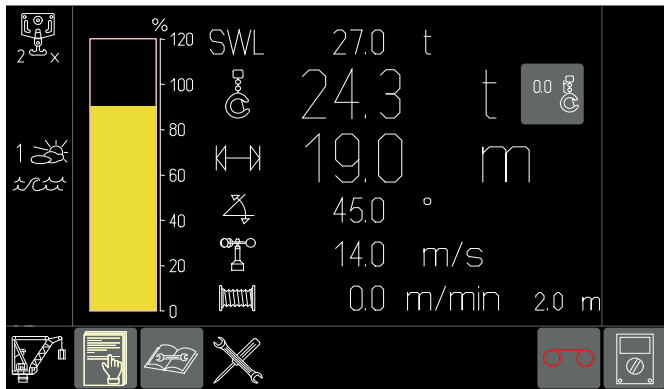


**LIEBHERR**

# Parts & Installation



Liebherr's Load Moment Limitation combines a series of significant advantages in cargo handling. It prevents overloads, increases the material handling rate and, at the same time, alleviates crane operator stress. With activated Load Moment Limitation, the crane operator can rely on the system. Operators of older Liebherr machines can upgrade their existing cranes with this unique function quickly and easily.



Load Moment Limitation Display

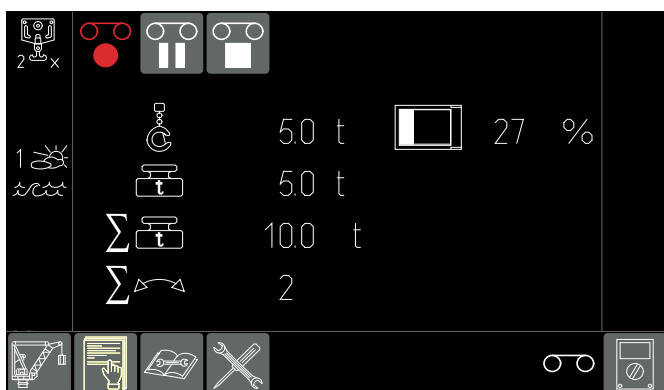
## Advantages

### Accurate measurement of the vertically lifted load:

- Reduced stress for the crane driver
- protection against down times as a result of overloads
- increased safety and life time for all components
- improved cargo handling efficiency
- Load Lift Confirmation – A display screen confirms to the driver that the load is no longer on the ground

### Further addition of Liebherr sensor technology and software is possible:

- Remote monitoring: instant localization of machines and supervision of optimal equipment operation.
- Strategic parts planning and scheduled maintenance reduce cost substantially and machine down time.
- Intelligent maintenance scheduling increases availability of the machines
- Systematic documentation of overloading and faulty operations
- Wind speed and winch speed monitoring



Load recorder Display

## Load Recorder

### Features:

- Counting of turnover cycles
- Automatic summary of transferred work load
- Data storage in memory card inside the control unit
- Easy analyse of data with PDR software (process data report)



# The Liebherr Group of Companies



## Wide Product Range

The Liebherr Group is one of the largest construction equipment manufacturers in the world. Liebherr's high-value products and services enjoy a high reputation in many other fields. The wide range includes domestic appliances, aerospace and transportation systems, machine tools and maritime cranes.

## Exceptional Customer Benefit

Every product line provides a complete range of models in many different versions. With both their technical excellence and acknowledged quality, Liebherr products offer a maximum of customer benefits in practical application.

## State-of-the-art Technology

To provide consistent, top quality products, Liebherr attaches great importance to each product area, its components and core technologies. Important modules and components are developed and manufactured in-house, for instance the entire tire drive and control technology for construction equipment.

## Worldwide and Independent

Hans Liebherr founded the Liebherr family company in 1949. Since that time, the enterprise has steadily grown to a group of more than 130 companies with over 41,000 employees located on all continents. The corporate headquarters of the Group is Liebherr-International AG in Bulle, Switzerland. The Liebherr family is the sole owner of the company.

[www.liebherr.com](http://www.liebherr.com)

## Liebherr-MCCTec Rostock GmbH

Liebherrstraße 1, D-18147 Rostock/GERMANY

Tel.: +49 381 6006 5020

[www.liebherr.com](http://www.liebherr.com), E-Mail: [maritime.cranes@liebherr.com](mailto:maritime.cranes@liebherr.com)

[www.facebook.com/LiebherrMaritime](https://www.facebook.com/LiebherrMaritime)